

New features in 2.22 since 2.20

- Setting `suggestAccidentals` to `'cautionary` turns only cautionary accidentals into `AccidentalSuggestions`. This can be used to distinguish between facsimile and editorial accidentals.

```
\relative {
  \key d \minor
  d''4 cis8 b? cis2
  \set suggestAccidentals = ##t
  d4 cis8 b? cis2
  \set suggestAccidentals = #'cautionary
  d4 cis8 b? cis2
}
```



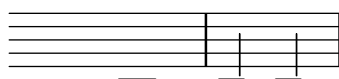
- The command `\ambitusAfter` has been added. It is used to move the ambitus to a different position.

```
\new Staff \with {
  \consists Ambitus_engraver
} \relative {
  \ambitusAfter key-signature
  \key d \major
  es'8 g bes cis d2
}
```



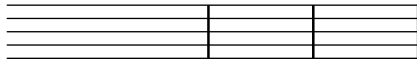
- A very short fermata and Henze variants of long and short fermatas have been added.

```
{
  c'1\veryshortfermata
  c'2\henzeshortfermata c'\henzelongfermata
}
```



- Fermatas and other articulations can now be added directly to multi-measure rests. Therefore the command `\fermataMarkup` is deprecated.

```
{
  R1\fermata
  R->
  R\coda
}
```

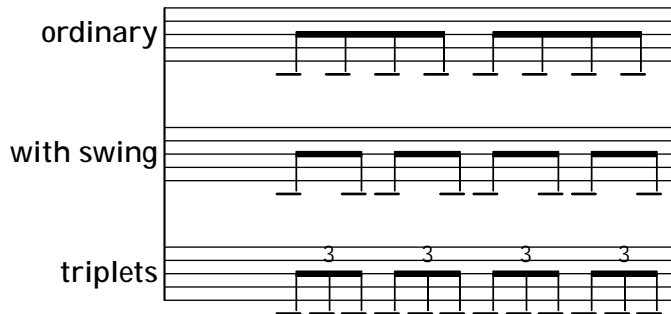


- Swing and irregular rhythmic patterns may now be applied to music expressions made of regular durations, which may be used to render inequal rhythmic interpretation in MIDI.

```

\include "swing.ly"
<<
  \new Staff \with {
    instrumentName = "ordinary"
  } \repeat unfold 8 c'8
  \new Staff \with {
    instrumentName = "with swing"
  } \repeat unfold 4 \tripletFeel 8 { c'8 c' }
  \new Staff \with {
    instrumentName = "triplets"
  } \tuplet 3/2 4 \repeat unfold 12 c'8
>>

```



- Chords may now be automatically inverted or voiced with dropped notes.

```

\chordmode {
  \dropNote 2 {
    c2:maj7 d:m7
  }
  \invertChords 1 d1:maj7
}

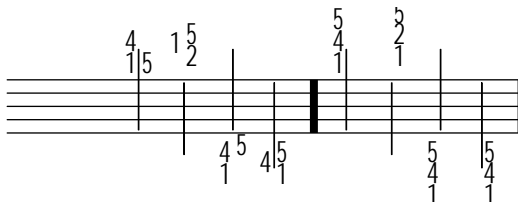
```



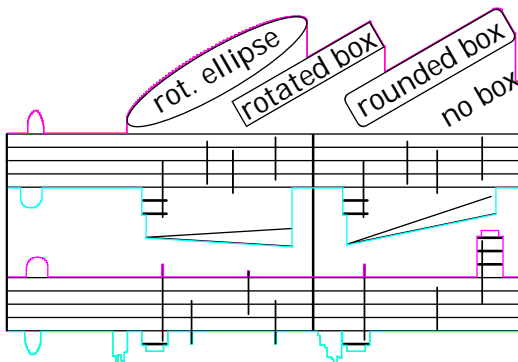
- Some ukulele fretboard-diagrams have been fixed, and new diagrams have also been added.
- Legacy chord naming functions `banter-chord-names` and `jazz-chord-names`, have been removed from the main codebase, as have been the properties `chordNamesExceptionsFull` and `chordNamesExceptionsPartial`. As part of that rewrite, power chords are now included in the default exceptions; they will be printed correctly (with a superscript like all other chords) with no additional tweaks required, thereby removing the need for the `\powerChords` predefined command. Anyone interested in the legacy functions may found a (somewhat working) copy of them in the `chord-names-alternative.ly` snippet.
- The `\partcombine` command, as well as all `partCombine`-prefixed commands, subroutines and property names, are now written with a capital C, such as `\partCombine`, `\partCombineApart` etc. The `\autochange` command is now also capitalized as `\autoChange`.

- The `New_fingering_engraver` will now consider the `X-align-on-main-noteheads` property of the `self-alignment-interface`. If set to true (`##t`), all fingerings oriented up or down will be arranged in a straight column and aligned on the noteheads on the correct side of the stem:

```
{
  \set fingeringOrientations = #'(up)
  <e'-1 d''-4 e''-5>4 <a'-1 b'-2 fis''-5>
  \set fingeringOrientations = #'(down)
  <e'-1 d''-4 e''-5> <eis'-1 e''-4 fis''-5>
  \bar "."
  \override Fingering.X-align-on-main-noteheads = ##t
  \set fingeringOrientations = #'(up)
  <e'-1 d''-4 e''-5> <a'-1 b'-2 fis''-5>
  \set fingeringOrientations = #'(down)
  <e'-1 d''-4 e''-5> <eis'-1 e''-4 fis''-5>
}
```

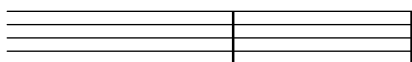


- Skylines will now take account of the rotation property of layout objects. Rotating a crescendo hairpin by applying `\override Hairpin.rotation = #'(15 0 0)`, for instance, will now actually have influence on the skylines and thus help to enhance spacing.



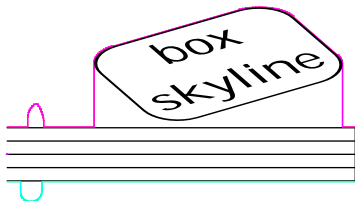
- Slight padding added between natural glyphs just touching at the corners in key cancellations.

```
{
  \omit Staff.TimeSignature
  \key ces \major s1 \key c \major s
}
```



- Skylines of boxes now reflect the actual box outline including rounded corners and rotation. `##(ly:set-option 'debug-skylines #t)`

```
{
  b'1^\markup \scale #'(2 . 1)
    \rotate #30
    \override #'(corner-radius . 3)
    \rounded-box \center-column { box skyline }
}
```

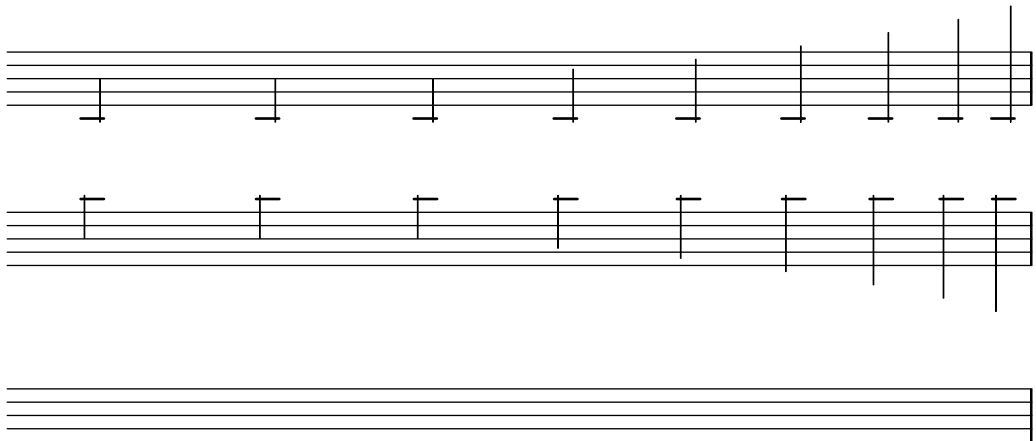


- Two new ornaments have been added.

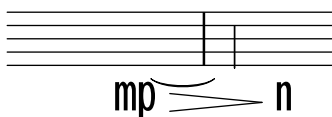
```
{
  c''2\slashturn c''\haydnturn
}
```



- Font glyphs for 256th, 512th, and 1024th flags and rests have been added.



- A dynamic command `\n` for *niente* has been added.



- Fret-diagrams may now be printed left-handed, setting `handedness` to `LEFT` (as a subproperty of `fret-diagram-details`).

```
\markup
  \center-column {
    "C"
    "(left-handed)"
  }
```

```

\override #`(fret-diagram-details . ((handedness . ,LEFT)))
\fret-diagram "6-x;5-3-3;4-2-2;3-o;2-1;1-o;"
}

```

C
(left-handed)



- The `output-classic-framework` procedure and the `-dclip-systems` are now available with the `SVG` backend.
- An argument, `-dcrop`, has been added, formatting `SVG` and `PDF` output without margins or page-breaks.