


Loading a Shapefile

To load a shapefile, start QGIS and click on the  toolbar button, or simply press `Ctrl+Shift+V`. This will bring up a new window (see [figure_vector_1](#)).

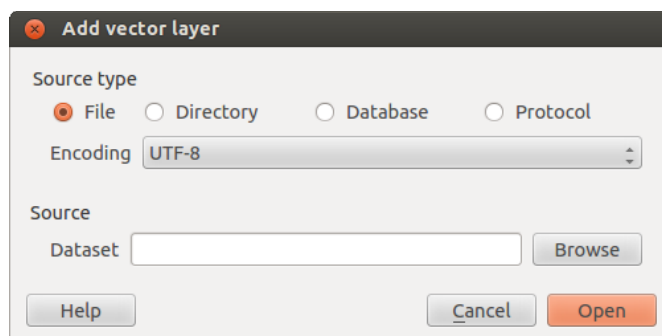



Figure 12.1: Image with width 25em 

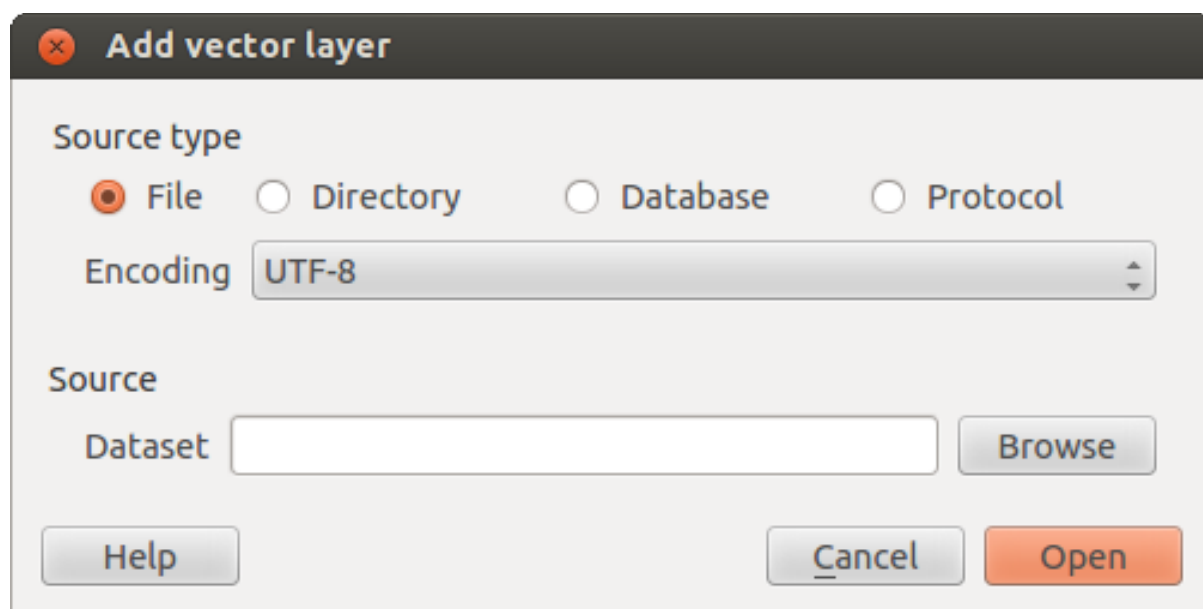




Figure 12.2: Image with without width settings 

From the available options check *File*. Click on **[Browse]**. That will bring up a standard open file dialog (see [figure_vector_2](#)), which allows you to navigate the file system and load a shapefile or other supported data source. The selection box *Filter*  allows you to preselect some OGR-supported file formats.

You can also select the encoding for the shapefile if desired.

Selecting a shapefile from the list and clicking **[Open]** loads it into QGIS. [Figure_vector_3](#) shows QGIS after loading the `alaska.shp` file.

Tip: Layer Colors

When you add a layer to the map, it is assigned a random color. When adding more than one layer at a time, different colors are assigned to each layer.

Once a shapefile is loaded, you can zoom around it using the map navigation tools. To change the style of a layer, open the *Layer Properties* dialog by double clicking on the layer name or by right-clicking on the name in the

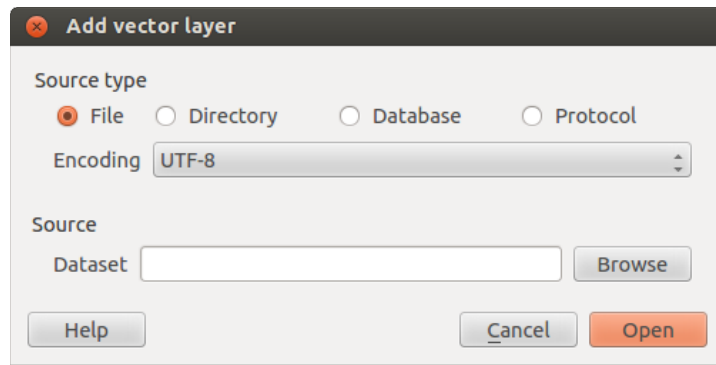


Figure 12.3: Image with without width settings at diferent resolution\nixl

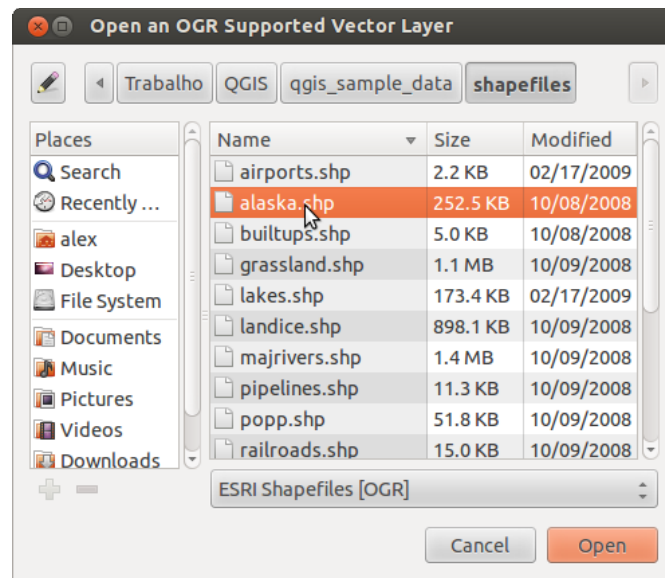


Figure 12.4: Open an OGR Supported Vector Layer Dialog 🐧

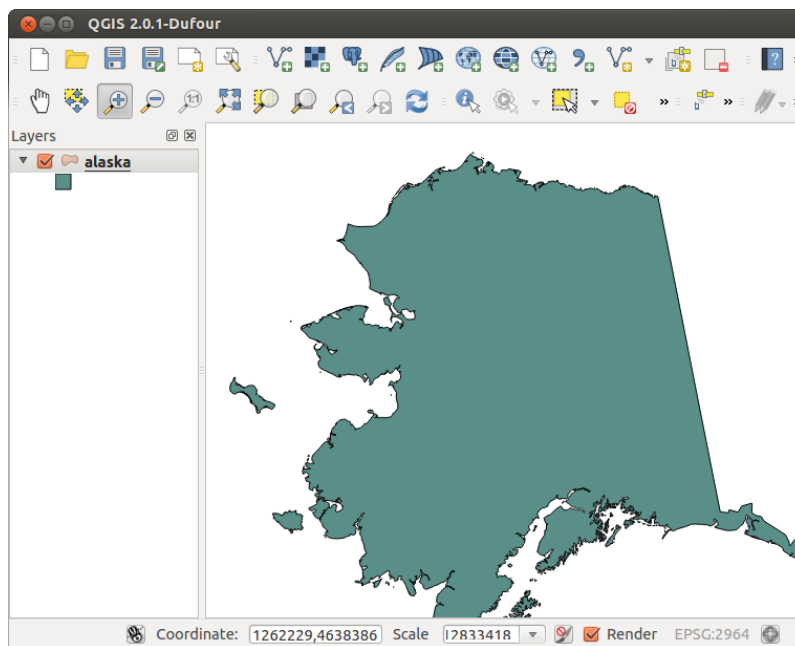


Figure 12.5: QGIS with Shapefile of Alaska loaded 🐧